

HALF-WAY MARK IS REACHED IN RED CROSS DRIVE

Approximately 75 Percent
Home Solicitation Is Finished
Industries Still To Come

The local Red Cross
ter has now received

tions totaling \$12,581. Its war fund drive for 200. Having reached approximately half of the drive committee heads confident that the will be reached.

Approximately 75 per cent of the house-to-house campaign has been completed but are still close to 100 canvassers to report. \$5300 of total has been contributed by industry and there is a number of the plants yet heard from.

Although not yet turned in, Westinghouse employees contributed 100 per cent of the drive and the donations from employees totaling \$443, matched by the plant, dollar for dollar, so that their donations totaled \$996. The employees of Westinghouse were canvassed by the director, Mr. S.

Gilbert L. Wright, chairman of the drive's war ind

committee, has announced eight 100 per cent bannermen to be distributed to the various departments of the plant. The still 30 to 40 industries yet heard from, but solicitation still progressing in the plants in town.

Other Firms Report

Heyer Products has contributed 100 per cent to the drive all the Andrew Jergens company which tripled employees which will present a challenge to the chapter, with \$1000 to the chapter, with coming from the employees and \$750 from the company announced that several comments of Walter Kiddle have contributed 100 per cent but it

tal from the factory is not available. It is hoped that the Walter Kidde donation will

The Public Service corporation gave a check for \$40,000 to the State of New Jersey to be used among the local chapters. Belleville received \$100,000.

The drive is now progressing in a speedier fashion and the nations are beginning to

Block Leaders Told Of Duties
By Chairman George West

leader group of the Def
Council met and was add
by John Hewitt, chairman
community was

community war service spoke of the volunteer duties in connection with those such as war savings volunteers, salvage volunteers, child volunteers, family security volunteers, housing volunteers, and others. George Weston, chairman of the block leader plan, outlined the duties of the block leader and told how some had learned about their duties and what

tern they should follow in
ing out their duties.

the place of block leaders in the salvage campaign, while Sullivan, defense co-ordinator, spoke on all the services of block leaders.

cord

News of Those In Service

Deighan, son of Mrs. Deighan, formerly of Nutley formerly has been promoted to Corporal at Fort Belvoir, Mo.

He has been in the service since entering the service at Fort Belvoir, Mo. He has just entered the service at Fort Belvoir, Mo.

Three local cadets, Randall T. Holden, Chester Kuta, and Emil Ostrowski have reported to the flight school for pilots at Maxwell Field, Ala. Aviation Cadet Holden is the son of Mr. and Mrs. John M. Sheridan of 334 Washington street. Prior to entering the service he was an instrument test pilot. Cadet Kuta is the son of Mr. and Mrs. John Kochinski of 79 West avenue. He attended Belleville High and St. Benedict's Prep school in Newark where he played on the golf and football teams. Cadet Ostrowski is the son of Mr. and Mrs. Adolph Ostrowski of 17 Campbell avenue. Ostrowski attended Plainfield High before entering the army. His father is a World War veteran. These cadets will receive nine weeks training preliminary to actual flight service.

Seaman John A. Oldham returned last week to the Naval Training station at Newport, R. I. after spending a seven day furlough with his mother, Mrs. Viola Oldham and his grandmother, Mrs. Francis Rhodes, of 132 William street. After three months in the navy Seaman Oldham has entered the school for electrician's mates. He ranked third among 500 contestants in the competitive examination for entrance and played

guard on the championship basketball team at the training school. A graduate of Belleville high school, he was formerly with Eastwood-Nealey corporation.

Cpl. Joseph Oldham, an uncle, is with the Army air force at Smyrna, Tenn. He has been in the army six months and was formerly a fireman in Belleville. He also resided at 132 William street and spent a furlough with his family last month.

George L. Meyer, son of Mr. and Mrs. George Meyer of 32 Columbus avenue, reported two weeks ago at the Naval training station in Bainbridge, Md. He enlisted in November. He was graduated from Belleville high school last June and became 18 in January. A brother, Harold, formerly with Sears, Roebuck and company here, has been in the navy seven months.

Miss Dorothy Duffy, who enlisted two weeks ago in the Women's Army Auxiliary corps, arrived in Daytona Beach Monday for preliminary training. She is 23, the daughter of Mr. and Mrs. William J. Duffy of 103 Overlook avenue. A graduate of Belleville high school she has been employed by the RCA Manufacturing company of Harrison.

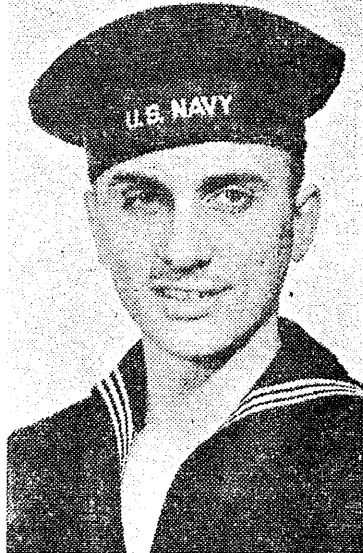
Owen Burgess Olson of 67 Linden avenue, who joined the Navy last month, is a student on the USS Piraric State in the North river. He will be graduated with the rank of ensign. A member of the engineering department of the Wallace & Tiernan company before his entrance into the navy, he was previously graduated from the Newark College of Engineering. He is the son of Mr. and Mrs. C. A. Olson.

Pfc Perry Cakutny concluded a 10-day leave with his parents Saturday and returned to Camp Campbell, Ky. He is the son of Mr. and Mrs. Michael Cakutny of William street.

Hospital Corps Grads.



Irving Levine



Joseph Remeik

Two Belleville men, Irving Levine, 20, and Joseph Peter Remeik, 19, who attended Belleville High school together, and enlisted in the Navy on the same day, November 19, 1942, were graduated last Friday as honor men from the Hospital Corps School of the U. S. Naval Hospital at Great Lakes, Ill. Levine completed his six-week basic training course with a grade average of 95.6 per cent and Remeik's average was 96.8. They completed with 525 other Bluejackets from 33 states for the high rating.

Lt. Joseph C. Duval, former news reporter and sport's page editor of The Times, is currently participating in the Louisiana maneuvers with the Blue Army. He is assistant intelligence officer with a dive bombardment squadron. Lt. Duval was graduated from Officer Candidate School of the Army air corps at Miami Beach, Fla., in October, after spending 15 months in Newfoundland as an enlisted man. He is

Levine, son of Mrs. Ida Levine of 64 Cortlandt street, attended Essex Junior College for a year, and prior to his enlistment in the Navy he was a laboratorian in a chemical control laboratory at the B. I. DuPont de Nemours and Company, Inc.

Before joining the Navy Corpsman Remeik was employed at the Wilbur B. Driver company.

The two honor men and the other graduates of the school will be sent to Naval hospitals for additional training and then assigned to general duty at sea or at other shore stations.

also a recent graduate of the Army Air Forces intelligence school in Harrisburg, Pa.

Sgt. Mortimer Snyder, aerial engineer and instructor at Rosecrans Field, St. Joseph, Mo., arrived in Belleville Thursday to spend a 10-day furlough with his parents, Mr. and Mrs. Samuel A. Snyder of 32 Tiona avenue. Sgt. Snyder, who has been in the army slightly over a year, was formerly with the Clark Thread

NEW RULING

(Continued from Page One)

asked that some attention be given to the matter and that advice by the commissioners be given him as to how he should deal with such problems as they arose in his own section of the town. Commissioner King suggested that copies of ordinance in other towns be prepared so that the town could study them and take into consideration what other municipalities had done.

Commissioner Waters suggested that it be ascertained whether the chickens were to be raised for commercial use or not and if they were a license would be refused them. He also suggested that the number of chickens for home use be limited so that there would be no overrunning into backyards.

Verterwall suggested that the zoning board might have jurisdiction over chicken coops in a residence zone. King, however, said that unless the application was made for business purposes the zoning board could not control the licensing. It was suggested that Town Attorney Keenana bring the present ordinance with amendments and those of other towns before the board for their consideration.

Mayor Williams thanked Verterwall for his presentation of the question and said that he felt Verterwall was "justified in not wanting business to spring up in a residential section." The question will again be broached at the next meeting.

CROPS CORPS

(Continued from Page One)

farm job when they have finished. Farmer said that parental consent for enrollment would be required in most cases.

In order to avert the food shortage a Crop Corps of 3,500-4,000 volunteers to take paid farm jobs is needed the country over. Such help is essential since millions of farm workers have left to join the armed services or have company of Newark. He is a graduate of Belleville high school.

taken jobs in industry. High school students are the most logical solution to the problem of who will farm, since they have the time and many of them have the desire to do the work.

Join Volunteer Group

Individual attempts to find farm work are not entirely successful and it is understood it is better to belong to a volunteer group or at least be part of a general plan. The work is not essentially hard and can be done in many cases without training.

Recruiting agents for farm work appear in some localities and some boys have already signed up with them. Although these students still go to school they are available for after school work and in between time duties which helps to lighten the burden of the farm.

Crop picking and even haying are not too strenuous for the 14-year-old boy. Many city lads who

have never had a chance at farm work and some who have never been on farms, are eager to join this program.

If enough requests from girls are received to join the corps they may be allowed to enter the course. All those boys and girls interested in taking the course may apply by writing to Farmer.

Musicians' Club Will Have Program On Saturday

Dorothy Cataldo, pianist of Belleville, and John Cataldo, violinist of Summit, will be the artists for the formal program of the Musicians' club to be held this Saturday evening at 87 Preston street.

Miss Cataldo, graduate of Belleville High School, is a pupil of Eleanor Bacon-Peck. Mr. Cataldo made a name for himself as a fine violinist while attending Belleville schools, and since graduat-

ing from Newark College of Engineering has done professional work in music. He is concertmaster of the Bloomfield Symphony orchestra and has played in the Nutley Symphony orchestra.

Mauder's Cantata At Christ

Episcopal On Sunday

"Penitence, Pardon and Peace," a cantata by Mauder, will be sung by the Christ Episcopal church choir on Sunday afternoon, at 4 o'clock, at the church on Washington avenue near Essex street.

This cantata is appropriate to the Lenten season, and is presented by the choir as a special program. John Markoe, the organist and choir director will appear as baritone soloist, with William Chapman, a member of the choir as tenor soloist. The public is invited.

BIG VARIETY at ACME!

YOU GET MORE **FLAVOR**

YOU GET MORE **VITAMINS**

really fresh **Produce**

NO POINTS REQUIRED

Acme produce is "hours fresher" — rushed to you at the peak of its flavor and deliciousness. For variety and value, visit your nearby Acme Market today and get your share of America's finest vitamin-rich, really fresh produce!

Iceberg Lettuce Fresh Crisp Large Head 12c

Large crisp heads of fancy fresh iceberg lettuce at worthwhile savings. A "must" item

ONIONS U. S. No. 1 Yellow 3 lbs. 21c	CALAVO PEARS Large Each 10c
CELERY Fresh Crisp 2 Bunches 25c	ORANGES Juicy Florida Dozen 29c
LEMONS Juicy SUNKIST 6 for 13c	APPLES Fancy Baldwin or Rome Beauty 3 lbs. 25c

CARROTS Fresh Crisp Tender Bunch 7c

Delicious golden carrots add flavor and color to your menus. Most economical too!

Save Your Points! These Items **NOT RATIONED**

Milk Farmdale Evaporated Tall Can 10c	EGGS Carton of 12 49c
Swansdown Cake Flour 24-lb. pkg. 26c	Gold Seal "dated" Eggs Carton of 12 51c
Gold Seal Flour 34-lb. pkg. 17c	
Gold Seal Flour 7-lb. bag 31c	
Gold Medal Flour 7-lb. bag 41c	
Raisin Bread Leaf 10c	
Best Rice ASCO 13c	
RICE Fancy 2-lb. 21c	
Prim Rice 12-oz. 9c	
Apple Butter 2 28-oz. Jars 29c	
Mayonnaise Pint Jar 25c	
HOT CROSS BUNS Package of 12 18c	
NBC PREMIUM CRACKERS 17c	
Mother's Oats 20-oz. pkg. 10c	
H-O OATS 2-lb. 18c	
Gold Seal Oats 4-lb. 19c	
Corn Flakes 12-oz. 5c	
Tasty-Ten 12-oz. 20c	
Shredded Wheat NBC 11c	
Noodles Gold Seal 13c	
Spaghetti Gold Seal 10c	
Macaroni Gold Seal 10c	
O' Cedar Cream Polish Bottle 23c	
Bread Supreme NOW SLICED 8c	
Enriched by using a yeast high in vitamin B1 content, niacin and iron	
LYKIT DOG FOOD 8-oz. 7c	
Play Boy MEAL 2-lb. 25c	
Red Heart Dog Food 12-oz. 29c	
Mastr-Mix DOG FOOD 8-oz. 25c	
TOILET TISSUE PRINCESS 7c	
Scott Tissue 1000 Sheets 7c	
Waldorf Toilet Tissue 4 rolls 16c	
Mazda Lamps 10c up	
Ultra Gloss Aluminum Cleaner 10-oz. Jar 21c	

Save On Rationed Items

Lima Beans Baby Dried 1-lb. 10c	PEAS Del Monte 16-oz. 17c
Pea Beans Fancy Dried 1-lb. 8c	PRUNES Large Calif. 1-lb. 15c
Tomato Paste 4-oz. can 10c	CATSUP ASCO 10-oz. 11c
Grapefruit Juice Pure Natural 8 POINTS No. 2 13c	
Vegetable Dinner Richford Assorted No. 2 11c	
Tomato Soup ASCO Improved 6 Points Each 3 22c	
Campbell Tomato Juice 8 14-oz. Can 8c	
Campbell Improved Soup 6 Points 11-oz. Can 11c	

All Kinds Except Beef and Chicken Varieties and Tomato

ACME GROUND BEEF 1-lb. 39c

It's delicious for hamburgers and meat loaf

Skinless Frankfurters 1-lb. 33c	
Dinner Frankfurters 1-lb. 35c	
Veal Brains Delicious With Eggs 1-lb. 19c	
Assorted Meat Loaves 1/4 lb. 10c	
Bologna Sliced 1-lb. 31c	Scrapple Philadelphia 1-lb. 18c
Cooked Salami 1-lb. 11c	PORK ROLL 1-lb. 27c

CHIPSO SOAP GRANULES 2 21 1/2-oz. Packages 41c

ON THAT DAY when you fell into the hands of the enemy, a curtain dropped, shutting out the world you had known and loved.

You crossed off the days one by one. Time blurred into a gray and miserable monotony.

You wondered dully whether you had been forgotten—whether you would ever again see familiar faces, hear voices you had once loved.

...forgotten?

Then one day, the curtain lifted, for a thrilling moment, when a parcel from home with the Red Cross on it was placed in your hands.

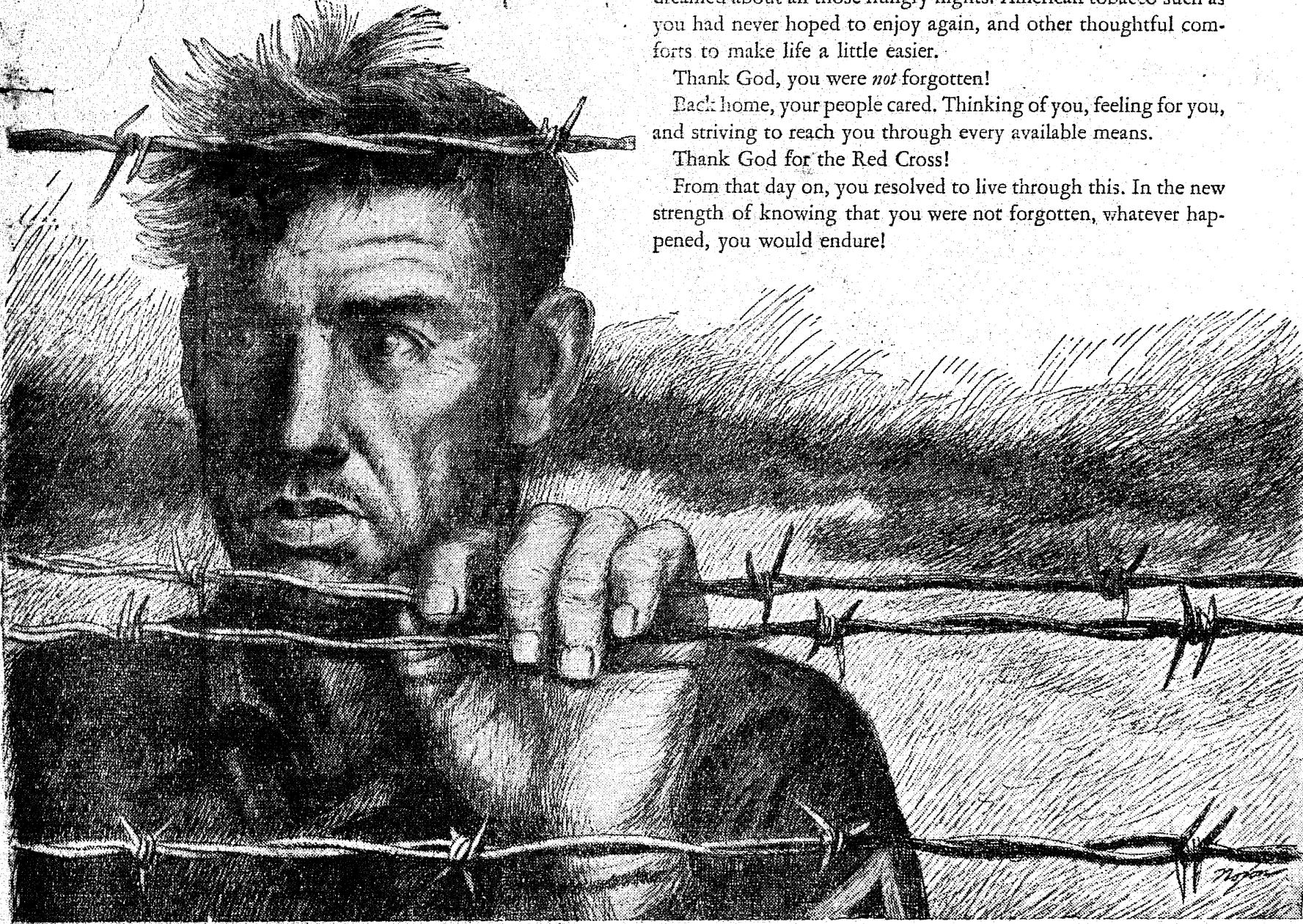
You opened it with trembling fingers. Out poured things you had not seen or tasted for months. American foods you had dreamed about all those hungry nights. American tobacco such as you had never hoped to enjoy again, and other thoughtful comforts to make life a little easier.

Thank God, you were not forgotten!

Back home, your people cared. Thinking of you, feeling for you, and striving to reach you through every available means.

Thank God for the Red Cross!

From that day on, you resolved to live through this. In the new strength of knowing that you were not forgotten, whatever happened, you would endure!



Helping our War Prisoners is one of the most precious privileges of those who support the Red Cross

Not only to our prisoners but to war's victims wherever they can be reached, the Red Cross is carrying food, clothing, medicines. The Second War Fund is greater than the First, but no greater than the increased needs. Give more this year—give double if you can.

Your Dollars help make possible the

AMERICAN RED CROSS

DOUBLE WHAT YOU GAVE LAST YEAR

Belleville's Quota Is \$26,200.00

Headquarters—Local Chapter

BELLEVILLE, N. J.

258 WASHINGTON AVE.

GET THESE 20 THRILLING COOK BOOKS

7500 RECIPES AND SUGGESTIONS

HUNDREDS OF HOW-TO-DO-IT PICTURES

DAILY MENUS FOR A FULL YEAR

BRAND NEW IDEAS FOR DAILY MEALS

20 COMPLETE COOK BOOKS

Meats; Poultry; Fish; Vegetables; Leftovers; Cakes; Pies; Desserts; Snacks; Menus and many others. SEE THEM ON DISPLAY

13¢ EA.

2 for 25¢

MAKE THE MOST OF WARTIME FOODS

Redeem No. 12 Sugar Stamp and No. 26 Coffee Stamp at Acme Markets

Acme Super Markets

LARGE FREE PARKING LOT ADJOINS MARKET

Membership Tea For New Women Given By Club

The Woman's club gave a tea for new members last Monday at the clubhouse. The program started at 2 p.m. with Mrs. Henry Squier as chairman. Miss Anna Santiglia, soprano, a pupil of Miss Josephine Rossi, was one of the soloists, while Miss Sybil Whindham, a pupil of Amy Stratton of Belleville, played the piano. Mrs. John Pole, a member of the club, had her large variety of canes on display and Mrs. John Gibson, another member, exhibited her collection of dolls. Several readings were given by Mrs. W. Douglas Clark Jr., chairman of the Drama department. Mrs. William P. Adams and Mrs. Frank Brothel presided at the tea table. New members include Mrs. Joseph Brent, Mrs. William Durkee, Mrs. Thomas Jackrell, Mrs. Walter Mack, Mmes. Joseph Niles, Mrs. Herbert E. North, and Mrs. Edward H. Puckhaber.

Board Accepts Resignations Of Four Teachers

The board of education accepted the resignations of four teachers who are on leave of absence, at the monthly meeting. The teachers resigning included Albert K. McBride, High School physical education instructor and former basketball coach, Mrs. Edith Dileo, Mrs. Margaret Haas, and Mrs. Rita Belcher. An extended leave of absence was granted to Mrs. Regina L. Kennedy and George T. Lees was hired as the high school science teacher at a basic salary of \$1800. The board voted to erase a one-time contract offered to Miss Marie C. Wood who became ill and was not able to accept the contract which has stood ever since. Wayne R. Parmer reported that 65 cases of chicken pox had broken out but that other communicable diseases were at normal, with the exception of measles which more teachers seemed to have than did students.

Heads Breeze



John T. Mascuch

The management of Breeze Corporations, Incorporated, operating five plants in North Jersey, was unanimously re-elected today by the holders of more than 75 per cent of the company's total outstanding stock. The vote was the largest ever polled at a Breeze stockholders' meeting. A board of directors proposed by the management and seated without a contest, re-elected John T. Mascuch, president, Joseph F. Lucas, vice president and Fred G. Shupp, treasurer. Herbert J. Dwyer was elected secretary. Joseph J. Mascuch, corporation founder and a former president and director, did not seek office. He is devoting his time and energies, as a consultant to the development of important Breeze war materials. A pioneer in the invention of modern aeronautical accessories, he is a brother of the re-elected president. They founded the company 17 years ago. The corporation is devoted 100 per cent now to war production.

MUSICAL

(Continued from Page 1)
ties of his talents. Hertz does have a longing to see his "Air Battle" enter the realm of civilian defense here. Called "an outstanding feature of civilian defense education," especially useful in civilian morale building, "of special service in acclimating civilian defense personnel to the sound of aerial combat" in England, the composer would like to see his musical narrative at work in America. It is a command performance monthly at the Essex House in Newark where Mr. Hertz goes to entertain members of the New York Air Service Port Area Command.
Mrs. Hertz, the former Miss Evelyn Harrison of Bloomfield, was one of her husband's music students. She is the daughter of T. W. Harrison who operated the Packard automobile agency on Washington avenue until last year. She was married two years ago and is much more interested in her infant son than in the "Air Battle," a composition which she dislikes.

Park Lane Cleaners Close For Duration Of War

Some patrons of the Park Lane Cleaners and Dyers at 519 Washington avenue have already been notified and others will be disconcerted to learn that Mr. and Mrs. Sylvester Zorens are making arrangements to close their establishment shortly. Zorens, already in the army, has a short leave to wind up his business. The proprietors wish to assure customers that all work now on the premises will be completed. No new work is being done. Although they must close entirely for the duration the Zorens are hopeful that they can operate an equally distinguished cleaning establishment in Belleville at the close of the war.

A son, Angelo, was born March 11 in American Legion Hospital, Newark, to Mr. and Mrs. Domenick Naso of Valley street. The couple have another son, Thomas, five.

HEAR, HEAR

JOBS, HAPPINESS, AND NORMAL LIVING can be yours with the use of the NEW SYMPHONIC

Acousticon Hearing Aid

For a Home or Office Demonstration, Without Cost or Obligation, of Our Ability to Help You Hear as a Normal Person Again, Call or Write

WILLIAM R. CLAY

THE ACOUSTICON INSTITUTE OF NORTH JERSEY

Business Office: Room 625, Federal Trust Bldg., 24 Commerce St., Newark, N. J.
Night Calls For Batteries, Cords, Supplies, Nu. 2-0336
394 Centre Street, Nutley.

Fencing Materials For Your Victory Garden

Fence Pickets - 7¢ to 8¢ each
Red Cedar - Gothic Point
3 ft. - 3 ft. 6 in., and 4 ft.

Chestnut Posts - 15¢ lineal foot
4 in. x 4 in. Various Lengths

Limited Stock—First Come, First Served

Available Now!

Bronze Wire
Window Screens & Doors

Order at once. When this stock is exhausted there will be no more.

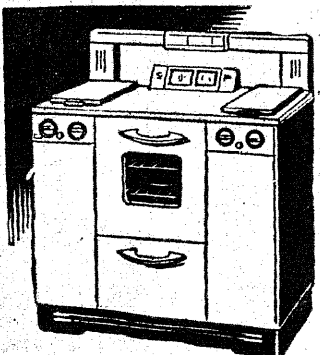
Phone Nu. 2-1000

New Jersey
COAL & SUPPLY CO.
119 E. CENTRE ST. NUTLEY, N.J.

GAS RANGES For Immediate Delivery

59.95

and up



Take advantage of this sale NOW. No more ranges are to be built for the duration. We can deliver your choice at once. Such well-known makes as "Grand," "Well-Built," "Royal Rose," "Detroit Jewel," and "Hostess."

One Whole Year To Pay Small Down Payment

Commercial and Industrial Stokers

Jersey
Appliance Co.

529 WASHINGTON AVE., BELLEVILLE, N. J.
Tel. BE. 2-1616 NU. 2-1000 Open Evenings

SEARS BELLEVILLE LAWN AND GARDEN HEADQUARTERS

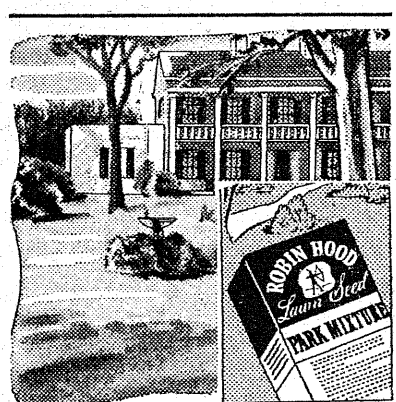
Has What It Takes To Make Gardens Grow



For Your War Garden
Garden Master Seeds

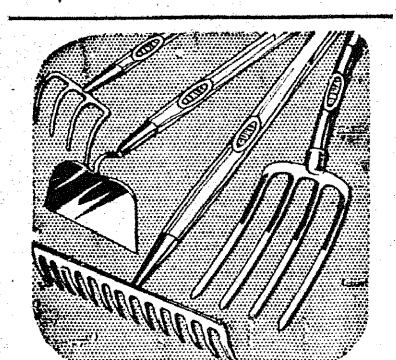
10¢ Packet
15 Packets . . . \$1.00

Sears has a complete variety of vegetable and flower seeds. Make your selections early . . . and start digging for victory!



PARK MIXTURE
Grass Seed
\$2.45 5 lbs. \$1.49 13 lbs. 52¢ lb.

Quick-germinating, sturdy grass seed. Contains Kentucky Blue, Red Top, Rye and White Clover.



DUNLAP
Garden Tools

89¢ Rake \$1.09 Fork

85¢ Hoe 85¢ Cultivator

Heads and shanks of these Dunlap tools are all forged from ONE SOLID BAR OF STEEL . . . no welds or rivets to break. Northern White Ash handles . . . light but strong.

SEARS, ROEBUCK AND CO.

STORE HOURS
Daily 9 to 5:30
Saturday 9 to 9

You can fill all your garden needs at Sears. However, tremendous early demands on our factories have delayed the delivery of some items advertised below. But we will gladly take your order and notify you within a few days when shipments are received.

All purchases of \$10.00 and over on Sears Easy Payment Plan.

Bush-Type or Climbing
Roses
59¢ Plant
Your choice of the bush-type or climbing rose in red, pink, yellow or white. All are vigorous, well-rooted plants. All 2 year old . . . northern field grown.
Rhubarb Plant . . . 59¢
Asparagus Plant . . . 59¢
Blackberry Bush . . . 89¢



Evergreens, Shrubs

Get your evergreens and shrubs from Sears complete nursery stock. Many varieties from which to choose . . . all hardy northern field-grown stock. (Evergreens available about March 27).



Fruit Trees - Just Arrived!

With only 20 to 30 sq. ft. of space in your yard you'll still have room to grow your favorite fruit tree. Sears big-crop fruit trees will bear fruit from one to four years after planting.



SEARS, ROEBUCK AND CO.

165 Washington Ave., Belleville
Telephone BE. 2-1011 and 2-1012
Free Parking, Corner Belleville and Washington Aves.



Why not have your doctor check regularly on your physical condition?

If you need money to pay doctor or hospital bills, see us about a Personal Loan.

Peoples National Bank and Trust Company

237 Washington Avenue, Belleville, N. J.
(Opposite the Post Office)

Member Federal Deposit Insurance Corp.

"Finance your installment loans the bank way"



"Sew in a Good Light"

Reddy Insists

"LIGHT HOUSES all over the country and I see for myself how much sewing is being done these days. Sewing machines are humming on every street as women run up slip covers, sew their own curtains and make over their clothes. Be sure that the light you work by is properly diffused and that it is of the right intensity. Replace blackened lamp bulbs with new ones and keep reflectors free of dust."

PUBLIC SERVICE

* BUY UNITED STATES WAR SAVINGS BONDS OR STAMPS * A-947

SHERIFF'S SALE

(Chancery A-106)

SHERIFF'S SALE - In Chancery of New Jersey, Between People's Mortgage Co., a corporation of the State of New Jersey, complainant, and Andrew A. Brady, Executor of the Estate of Anna Brady, defendant; et al., defendants. Et. Fr. for sale of mortgaged premises.
By virtue of the above stated writ of fieri facias, to me directed, I shall expose for sale by public vendue, at the Court House, in Newark, on Tuesday, the thirtieth day of April, next, at two o'clock P. M., all the following tract or parcel of land and premises hereinafter particularly described, situate, lying and being in the Town of Belleville, Essex County, New Jersey.
Beginning at a point in the Westerly line of Prospect Place distant Northerly 65.9 feet from the Northerly line of John Street; thence (1) running Northerly along said Westerly line of Prospect Place 50 feet; thence (2) Westerly 110 feet 4 inches; thence (3) Southerly 50 feet; thence (4) Easterly 100 feet and 2 1/2 inches to said Westerly line of Prospect Place, the point or place of Beginning.
Being known as No. 55 Prospect Place, Belleville, N. J.
The approximate amount of the Deeds to be satisfied by said sale is the sum of Two Thousand Nine Hundred Sixty-two Dollars and Thirty-two Cents (\$2,966.32), together with the costs of this sale.
Newark, N. J., March 8, 1943.
GEORGE H. BECKER, Sheriff.
Lorenz & Stamler, Sols. \$15.96 4-8

LEGAL NOTICE

ESSEX COUNTY ORPHANS' COURT on Petition, Etc.

In the Matter of the ESTATE OF TERESA M. VREELAND, Deceased.
ORDER TO SHOW CAUSE WHY LANDS SHOULD NOT BE SOLD TO PAY DEBTS.
It appearing from the duly verified petition and verified account of Teresa M. Vreeland, Deceased, that the personal estate of Teresa M. Vreeland, Deceased, is insufficient to pay her debts and requires the aid of the Court in the premises.
It is thereupon on this 15th day of February, 1943, ORDERED that all persons interested in the lands, tenements, hereditaments and real estate of the said Teresa M. Vreeland, Deceased, show cause before this Court at the Court House in the City of Newark on the 27th day of April, 1943, at 10 A. M. why the said lands, tenements, hereditaments and real estate of said Teresa M. Vreeland, Deceased, should not be sold as will be sufficient to pay her debts.
And it is further ORDERED that this Order be published in one of the newspapers of this State for six (6) weeks at least once in each week.
DANIEL J. BRENNAN Judge
Essex County Orphans' Court
EUGENE F. HOFFMANN Surrogate. 4-1.

NOTICE

PUBLIC NOTICE is hereby given that the following proposed ordinance was introduced and passed on first reading at a meeting of the Board of Commissioners

of the Town of Belleville held Tuesday evening, March 23, 1943, and further notice is hereby given that the second and third reading of said ordinance will be considered by said Board at a meeting to be held at the Town Hall, Washington Avenue, and Belleville Ave., Tuesday evening, April 13th, 1943 at 8 o'clock P.M., W.T. when all objections to the passing of the same will be heard and considered.
FLORENCE R. MOREY, Town Clerk
AN ORDINANCE TO AMEND AN ORDINANCE ENTITLED, "AN ORDINANCE PERTAINING TO THE SALE OF ALCOHOLIC BEVERAGES AND REGULATION THEREOF, IN THE TOWN OF BELLEVILLE, NEW JERSEY." Adopted April 20th, 1934.
The Board of Commissioners of the Town of Belleville, in the County of Essex do ordain:
Section 1. That Section 6 of the above entitled ordinance be amended as follows: "Section 6. Sales of alcoholic beverages shall not be permitted by licensees hereunder between the hours of 2 A.M. and 1 P.M. on Sundays, nor between the hours of 2 A.M. and 7 A.M. on other days. During the hours sales are prohibited, the entire licensed premises shall also be closed; provided, however, that this provision shall not apply to hotels, restaurants as defined in R. S. 33:1-1, or to any other establishments where the principal business is other than the sale of alcoholic beverages.
The hours hereinbefore referred to shall be the time officially in effect in the City of Belleville."
Section 2. This ordinance shall take effect immediately upon first publication in the newspapers.

Two Fatalities Warning To All

Living pace with town casualties on the battle is another grim reaper taken the lives of two toddlers the past week.

Result of auto accidents, four-year-old Giordano and three-year-old layers were fatally injured in the front of their homes. Two other 10 and two respectively, have narrowly escaped the same fate. The first is fighting a game battle after undergoing a complicated brain operation which has involved grafting a section of his leg bone into his skull.

Concerned over these happenings, Chief of Police Spatz has asked for "cooperation among us all which can control these unhappy incidents and save lives."

He points out that darting from behind parked vehicles in the path of moving cars, lots are unkind of their dangers, and motorists, no matter how careful, cannot always escape hitting children under such circumstances. Parents, he says, should keep their children off the streets and

drivers of pleasure cars and trucks should always so control their vehicles that they are able to stop on the "proverbial dime."

The Chief has also stated that a child playing on the streets while its mother may be at work in a defense plant or otherwise engaged, provides a harrowing problem for the police department which cannot police such situations as it does factories, stores and homes.

In the present cases, because most of the drivers have been held for the grand jury, the onus of blame cannot yet be determined. Nevertheless, two of those involved were underage and did not have driving licenses. Whatever the verdict, the fact that two young lives were lost and two endangered, remains unchanged. At a time when the casualties of war will begin to be reported in ever-increasing numbers, civilians should be more than ever on their guard against the same factors which in the last war, caused unnecessarily fatalities alarmingly commensurate with the lives lost in battle.

Gloomy Outlook For Gourmets

The pleasure of inviting friends in over the week-end for a last fling at a juicy roast of beef before rationing goes into effect in earnest on Monday, will have to be given up by most of us. The shortage during for the last two weeks which has seen butchers wearily repeat "no more meat today", threatens to prevail through the week-end without the situation easing.

Opinions vary among the trade, as to the effect rationing will have on the supply. Some feel that the supply will be greater as soon as the machinery gets in motion, while others have come to the conclusion that the government isn't "holding off." They believe there is a definite shortage of cattle on the hoof. In any event, it is expected that in spite of limited ability to purchase,

the public will be confronted with bare show cases for a while longer.

And that conditioning may be just as well, since the new point system allowing 16 units per week won't go very far, divided between butter, oils, cheese and fish as well as meat. "Systems" will probably be devised whereby mathematicians can discover an easy allocation for us. However that may be, it is doubtful that many Americans used to "good eating", will find it sufficient.

Those with porterhouse tastes will, unless they prodigally gamble all at once, have to discover the virtues of the "variety meats" to stretch their chops, stews and pot pies as far as possible. Question is what the butcher will do with their hither-to popular roasts, for the duration.

Let's Plan Better Highways

Even since Colonial times, New Jersey has been the throat through which poured the transportation of a continent. First Indian trails were widened into wagon trails, and then followed coach roads, a great tangle of railroads and finally, broad white highways. Each in turn has, a booklet on the subject points out, concentrated on the same main job—linking New England and the mouth of New York Harbor with the southern seaboard and the cities of the West.

Now that New Jersey's highways are experiencing some let-up in passenger car traffic, there is time for a careful diagnosis of the chronic difficulties of the State's highway system. It has suffered from a persistent condition of daily congestion and great week-end traffic snarls, despite annual improvements and additions to roadways.

In the past, highway construction has concentrated on meeting the needs of in-

terstate commercial traffic while the state's own intercity and recreational traffic has been left to shift for itself. Lack of roadside control has also contributed to the problem.

Modern roadway practice suggests a double barreled prescription: parkways specifically designed and located to serve the private car needs of Jersey motorists and freeways which control the right of access from adjoining roads in order to assure express movement for bus, truck and passenger traffic.

Bettering the state's highways can be done efficiently in the postwar era only if movements are begun now through state legislation, which will include these roadways on the list of projects now being planned. Specific plans should be underway and acquisitions of the rights of way for proposed routes initiated to assure fair bargaining and economy in the post-war building program.

Good Riddance



(WNU Service)

PLAN MEETINGS FOR V GARDENS

Instructions Will Be Given By Authorities; Propose Protecting Ordinance

At a meeting of the Victory Gardens committee of which William Plenge is chairman it was decided that public meetings would be held in the future for all those interested in planting victory gardens. Queries on gardens have been rather slow in coming, Plenge reported, but the weather may bring out many more devotees.

At the public meetings pamphlets will be handed out to all interested victory gardeners with instructions regarding fertilizer, seeds, and planting. Speakers will be recruited and it is expected that R. E. Harman, agricultural agent for Essex County will be asked to speak when it is determined how many people are planting gardens and how many will turn out for the meetings. They may be run on the forum plan or they may be conducted along informational lines, according to Plenge.

Ordinance Proposed
At the town meeting Tuesday night, Mayor Williams proposed an ordinance creating a penalty for anyone who disturbed a Victory garden or for any vandalism resulting on a Victory garden. Stating that two gardens had been damaged by vandalism on Saturday, the Mayor suggested that a \$25 penalty be imposed upon any person stealing or damaging. He said that the privately owned gardens would not be subject to that ruling but that such a fine would release the town from any responsibility regarding things that happened to town owned lots.

Simon Liquor Store Stops Deliveries, Changes Hours

Mrs. Harry Simon, proprietress of Simon's Wine and Liquor Store at 549 Washington avenue, in her husband's absence in the army, has eliminated all delivery service. The regulation will go into effect Monday. Lack of help and facilities for the purpose have forced Mrs. Simon to this decision.

In a further attempt to curtail the use of heat and otherwise meet wartime restrictions Mrs. Simon has also arranged a new schedule of store hours. On Monday, Tuesday, Wednesday and Thursday of each week the store will be opened from 10 a. m. to 10 p. m.; on Friday and Saturday from 10 a. m. till 11 p. m. and on Sunday from 1 to 10 p. m. She is hopeful that patrons will show the same forbearance with these regulations as they have evidenced in the past difficult months.

Petrians Fete James Carlson

The Petrean club will give a welcome-home party Sunday evening in the club rooms in St. Peter's hall for James Bernard Carlson, recently awarded an honorable discharge from the United States marine corps. Carlson was a member of one of the first marine detachments to invade Guadalcanal. He is the son of Mr. and Mrs. Bernard Carlson of 5 Union terrace. A local boy, he attended St. Peter's School and Good Counsel high school. The affair is an about face for the Petreans who have been busy since the war started feting their departing members.

Woman's Club Activities

Mrs. John Denike, president of the Belleville Woman's club will be hostess at luncheon and bridge today in the clubhouse. Her guests will be the club's board of directors.

The literature department will have its annual dinner and theatre party in New York Wednesday, March 31.

Members attending the program of club Woman's Day at a Newark department store tomorrow will be Mrs. John O'Brien, Jr., Mrs. H. Lester Hamilton, Mrs. Elwood Russell, Mrs. Arthur E. Mayer, Mrs. William Allen, Jr., Mrs. Norman Lauterette and Mrs. William Pace.

MAYOR PROPOSES

(Continued from Page 1)

ing a fifth commissioner which has had the board at a standstill for six months, Commissioner Noll stayed away from a regular meeting while Commissioner King was out of town. The Mayor sought to overcome such a stand by having all the commissioners agree to be present if possible, although there was another vacancy at the meeting.

Commissioners Noll and King have steadily proposed the names of Raymond E. Mertz for fifth commissioner ever since the death of Public Safety Director Clark. They have been opposed by Williams and Waters. Two weeks ago Waters broke his silence on the name of Michael J. Flynn. Williams stated at that time that he was satisfied with the name of Flynn but Noll and King opposed.

STUDENT WINS

that the detailed study of raw materials has been utilized.

The propaganda division shows current and advanced poster ideas while the costume design section shows the challenge of the future to today's designers. This exhibit gives a chance to judge the effect of war on the young artist and what is being accomplished in New Jersey schools as regards art trends is not to be equalled.

The boys seemed to excel the girls in the number of entries which is due to the fact, says Mr. Diehl, that most of the girls are interested in costume design which is a much more competitive field than some of the boys entered. Belleville shows that it still has the artists however, having won awards nearly every previous year. "Because there were many more schools competing than there were prizes, we are very proud of ourselves to have netted two of the main prizes," said Mr. Diehl.

Co-Chairman Of Luncheon

Mrs. Eleanor Bacon-Peck of Overlook avenue is co-chairman with Mrs. Perry C. Burleigh of Maplewood of the spring conference of the New Jersey Federation of Music clubs. The conference will precede a luncheon at the Hotel Robert Treat on Wednesday, April 14. Distinguished speakers at the luncheon will be Mrs. Guy P. Gannett, president of the National Federation of Music clubs and Mme. Olga Stokowski.

A transparent, non-inflammable, ventilated plastic helmet—complete with detachable snood—is a combination safety and beauty aid for women war workers.

Board Gives Bonus To Men In Service

A resolution was proposed at the town meeting Tuesday night that \$350 be granted Mickey D'Agostino, the first town employee to enter the service in 1941. A leave of absence was also granted to Michael J. Sheehan, of the Department of Public Works, who entered the army as a Captain. Sheehan who was town engineer, will have his salary continued until April 30. A month's salary was also granted to Theodore Close of the Recreation Department who will enter the American Field Service.

It was also agreed by the Commissioners that at the next meeting they would sit as an executive board for the hearing of the officers of the Woodland Rod and Gun club in which a stabbing took place on January 31.

F & F Market Given Award For Fat Collection

A certificate of merit was this week awarded Walter Salek, owner of the F & F Meat Market, 384 Union avenue, by the Butcher's Advocate Weekly of New York City, meat handler's trade journal. The market has turned over to the government 968 pounds of fat collected from its months. It has been a consistent months it has been a consistent leader in the town's fat salvage.

The Belleville Times

Published Every Thursday by The Belleville News Corporation, Belleville, N. J. Russell D. Hav. President and Publisher.

National Advertising Representatives American Press Association 225 West 38th Street, New York, N. Y. Tel. Pent. 4-0235

Communications are desirable, but unless signed, will not be used. All reading matter should reach the office before Tuesday night. Display advertising cannot be taken after Tuesday, 5 P.M. Classified ads must be in by Wednesday noon.

Advertising, News and Business Office 328 Washington Avenue Telephone Belleville 2-3210

24 HOUR SERVICE
Phone NU. 2-0608 Night NU. 2-2612-J
EAST NUTLEY GARAGE
C. A. FANELLI, Prop.
Body and Fender Repairing
Expert Auto Repairing
Welding and Painting
55 Washington Avenue, Nutley, N. J.

Eyes Examined Be. 2-1518
Dr. J. F. de Groat
Optometrist
244 Greylock Parkway
Belleville, N. J.

The Margaret Sheehan School of Stage Dancing

66A Washington Ave., Belleville, N. J.

ANNOUNCES NEW CLASSES BEING FORMED

All Pupils Registering Now will be Trained for *Spring Recital*

For Further Information Call Belleville 2-2638



Strengthen and Remodel Your Home for National Defense Now while Material and Skilled Mechanics Are Still Available. NO CASH REQUIRED UP-TO-3 YEARS TO PAY

Belleville 2-3964 Tel. Belleville 2-2717 For Free Estimates

T. W. Monaghan Lumber Co.

539 JORALEMON ST.—449 CORTLANDT ST., BELLEVILLE
Guaranteed Workmanship • Compensation and Liability Insurance

NOTICE!

We are closing within the near future for the duration due to the entrance into the Armed Services of Sylvester Zorens, proprietor.

No new work accepted. All work now on the premises will be finished.

Park Lane Cleaners

547 Washington Avenue

(Near Overlook)

Belleville, N. J.

Genuine Cannel Coal

(Large Lumps)

For Your Fireplace

J. Frank Post, Inc.

894 BROADWAY, NEWARK

HUmboldt 2-0208 — 0209

FINE 3-Piece Living Room Sets



and ODD CHAIRS at Attractive Prices

BREAKFAST SETS
BED ROOM SETS
DINING ROOM SETS

Bed Springs, Mattresses, Dressers, Chests, Wardrobes, Kitchen Chairs.

WE ALSO REUPHOLSTER

Roberts Furniture Store

65, 76 and 78 Washington Ave. Ph. Belleville 2-3658



We can help by keeping these buses running to serve you and carry workers to war plants. We save wear and tear on buses and conserve on gasoline by making fewer stops. So please get on and off at the stop nearest you:

**FEWER BUS STOPS
HELP SAVE GAS
FOR VICTORY**

**DE CAMP
BUSES**

**WARTIME USE
OF TELEPHONE**



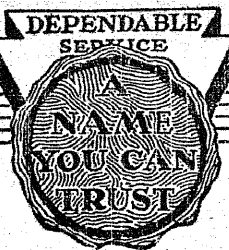
TO AID THE WAR EFFORT
Distance, to war-busy centers.
LOOK IN YOUR TELEPHONE DIRECTORY FIRST
before calling "information" for nearby numbers.
DO NOT TELEPHONE DURING AN AIR RAID
ALARM—or for some time after the "All Clear"

TUNE IN "THE TELEPHONE HOUR"
MONDAY NIGHTS AT 9 - WEAF - KYW

OFFICIAL TABLE OF CONSUMER POINT VALUES FOR MEAT, FATS, FISH, AND CHEESE

No. 1—Effective March 29, 1943

COMMODITY	Points per lb.	COMMODITY	Points per lb.	COMMODITY	Points per lb.	COMMODITY	Points per lb.	COMMODITY	Points per lb.
BEEF		BEEF		LAMB—MUTTON		PORK		READY-TO-EAT MEATS	
STEAKS		VARIETY MEATS		STEAKS AND CHOPS		STEAKS AND CHOPS		COOKED, BOILED, BAKED, AND BARBECUED	
Porterhouse.....	8	Brisket.....	3	Center Chops.....	8	Center Chops.....	8	Dried Beef.....	12
T-Bone.....	8	Hearts.....	4	End Chops.....	7	End Chops.....	7	Ham—bone in, whole or half.....	9
Club.....	8	Kidneys.....	4	Loin—boneless, fresh and cured only.....	10	Loin—boneless, fresh and cured only.....	10	Ham—bone in, slices.....	11
Rib—10-inch cut.....	7	Livers.....	4	Leg Chops.....	7	Leg Chops.....	7	Ham—boneless, whole or half.....	10
Rib—7-inch cut.....	8	Sweetbreads.....	4	Shoulder Chops—blade or arm chops.....	7	Shoulder Chops—blade or arm chops.....	7	Ham—boneless, slices.....	11
Sirloin.....	8	Tails (ox joints).....	3	Shoulder Chops—square cut—bone in.....	6	Shoulder Chops—square cut—bone in.....	6	Picnic or Shoulder—boneless.....	10
Sirloin—boneless.....	9	Tongues.....	6	Shoulder Chops—square cut—bone in.....	6	Shoulder Chops—square cut—bone in.....	6	Bouillon Cubes, Beef Extract, and concentrates.....	7
Round.....	8	Tripe.....	3	ROASTS		ROASTS		Tongues.....	9
Top Round.....	8			Leg—whole or part.....	6	Leg—whole or part.....	6	Spareribs.....	9
Bottom Round.....	8			Sirloin Roast—bone in.....	6	Sirloin Roast—bone in.....	6	Pigs Feet—boneless.....	6
Round Tip.....	8			Yoke, Rattle, or Triangle—bone in.....	5	Yoke, Rattle, or Triangle—bone in.....	5		
Chuck or Shoulder.....	7			Yoke, Rattle, or Triangle—boneless.....	5	Yoke, Rattle, or Triangle—boneless.....	5		
Flank.....	8			Chuck or Shoulder, square cut—bone in.....	6	Chuck or Shoulder, square cut—bone in.....	6		
		VEAL		Chuck or Shoulder, square cut—boneless.....	5	Chuck or Shoulder, square cut—boneless.....	5		
		STEAKS AND CHOPS		Chuck or Shoulder, cross-cut—bone in.....	5	Chuck or Shoulder, cross-cut—bone in.....	5		
		Loin Chops.....	8	Chuck or Shoulder, cross-cut—boneless.....	4	Chuck or Shoulder, cross-cut—boneless.....	4		
		Rib Chops.....	7	ROASTS		ROASTS			
		Round Steak (cutlets).....	6	Rump and Sirloin—bone in.....	6	Rump and Sirloin—bone in.....	6		
		Sirloin Steak or Chops.....	7	Rump and Sirloin—boneless.....	6	Rump and Sirloin—boneless.....	6		
				Leg.....	6	Leg.....	6		
				Shoulder—bone in.....	6	Shoulder—bone in.....	6		
				Shoulder—boneless.....	5	Shoulder—boneless.....	5		
				Stews and Other Cuts		Stews and Other Cuts			
				Breast—bone in.....	4	Breast—bone in.....	4		
				Breast—boneless.....	4	Breast—boneless.....	4		
				Flank Meat.....	5	Flank Meat.....	5		
				Neck—bone in.....	5	Neck—bone in.....	5		
				Neck—boneless.....	4	Neck—boneless.....	4		
				Shank—bone in.....	5	Shank—bone in.....	5		
				Shank—boneless.....	4	Shank—boneless.....	4		
				Stew and Other Cuts		Stew and Other Cuts			
				Breast—bone in.....	4	Breast—bone in.....	4		
				Breast—boneless.....	4	Breast—boneless.....	4		
				Flank Meat.....	5	Flank Meat.....	5		
				Neck—bone in.....	5	Neck—bone in.....	5		
				Neck—boneless.....	4	Neck—boneless.....	4		
				Shank—bone in.....	5	Shank—bone in.....	5		
				Shank—boneless.....	4	Shank—boneless.....	4		
				Stew and Other Cuts		Stew and Other Cuts			
				Breast—bone in.....	4	Breast—bone in.....	4		
				Breast—boneless.....	4	Breast—boneless.....	4		
				Flank Meat.....	5	Flank Meat.....	5		
				Neck—bone in.....	5	Neck—bone in.....	5		
				Neck—boneless.....	4	Neck—boneless.....	4		
				Shank—bone in.....	5	Shank—bone in.....	5		
				Shank—boneless.....	4	Shank—boneless.....	4		
				Stew and Other Cuts		Stew and Other Cuts			
				Breast—bone in.....	4	Breast—bone in.....	4		
				Breast—boneless.....	4	Breast—boneless.....	4		
				Flank Meat.....	5	Flank Meat.....	5		
				Neck—bone in.....	5	Neck—bone in.....	5		
				Neck—boneless.....	4	Neck—boneless.....	4		
				Shank—bone in.....	5	Shank—bone in.....	5		
				Shank—boneless.....	4	Shank—boneless.....	4		
				Stew and Other Cuts		Stew and Other Cuts			
				Breast—bone in.....	4	Breast—bone in.....	4		
				Breast—boneless.....	4	Breast—boneless.....	4		
				Flank Meat.....	5	Flank Meat.....	5		
				Neck—bone in.....	5	Neck—bone in.....	5		
				Neck—boneless.....	4	Neck—boneless.....	4		
				Shank—bone in.....	5	Shank—bone in.....	5		
				Shank—boneless.....	4	Shank—boneless.....	4		
				Stew and Other Cuts		Stew and Other Cuts			
				Breast—bone in.....	4	Breast—bone in.....	4		
				Breast—boneless.....	4	Breast—boneless.....	4		
				Flank Meat.....	5	Flank Meat.....	5		
				Neck—bone in.....	5	Neck—bone in.....	5		
				Neck—boneless.....	4	Neck—boneless.....	4		
				Shank—bone in.....	5	Shank—bone in.....	5		
				Shank—boneless.....	4	Shank—boneless.....	4		
				Stew and Other Cuts		Stew and Other Cuts			
				Breast—bone in.....	4	Breast—bone in.....	4		
				Breast—boneless.....	4	Breast—boneless.....	4		
				Flank Meat.....	5	Flank Meat.....	5		
				Neck—bone in.....	5	Neck—bone in.....	5		
				Neck—boneless.....	4	Neck—boneless.....	4		
				Shank—bone in.....	5	Shank—bone in.....	5		
				Shank—boneless.....	4	Shank—boneless.....	4		
				Stew and Other Cuts		Stew and Other Cuts			
				Breast—bone in.....	4	Breast—bone in.....	4		
				Breast—boneless.....	4	Breast—boneless.....	4		
				Flank Meat.....	5	Flank Meat.....	5		
				Neck—bone in.....	5	Neck—bone in.....	5		
				Neck—boneless.....	4	Neck—boneless.....	4		
				Shank—bone in.....	5	Shank—bone in.....	5		
				Shank—boneless.....	4	Shank—boneless.....	4		
				Stew and Other Cuts		Stew and Other Cuts			
				Breast—bone in.....	4	Breast—bone in.....	4		
				Breast—boneless.....	4	Breast—boneless.....	4		
				Flank Meat.....	5	Flank Meat.....	5		
				Neck—bone in.....	5	Neck—bone in.....	5		
				Neck—boneless.....	4	Neck—boneless.....	4		
				Shank—bone in.....	5	Shank—bone in.....	5		
				Shank—boneless.....	4	Shank—boneless.....	4		
				Stew and Other Cuts		Stew and Other Cuts			
				Breast—bone in.....	4	Breast—bone in.....	4		
				Breast—boneless.....	4	Breast—boneless.....	4		
				Flank Meat.....	5	Flank Meat.....	5		
				Neck—bone in.....	5	Neck—bone in.....	5		
				Neck—boneless.....	4	Neck—boneless.....	4		
				Shank—bone in.....	5	Shank—bone in.....	5		
				Shank—boneless.....	4	Shank—boneless.....	4		
				Stew and Other Cuts		Stew and Other Cuts			
				Breast—bone in.....	4	Breast—bone in.....	4		
				Breast—boneless.....	4	Breast—boneless.....	4		
				Flank Meat.....	5	Flank Meat.....	5		
				Neck—bone in.....	5	Neck—bone in.....	5		
				Neck—boneless.....	4	Neck—boneless.....	4		
				Shank—bone in.....	5	Shank—bone in.....	5		
				Shank—boneless.....	4	Shank—boneless.....	4		
				Stew and Other Cuts		Stew and Other Cuts			
				Breast—bone in.....	4	Breast—bone in.....	4		
				Breast—boneless.....	4	Breast—boneless.....	4		
				Flank Meat.....	5	Flank Meat.....	5		
				Neck—bone in.....	5	Neck—bone in.....	5		
				Neck—boneless.....	4	Neck—boneless.....	4		
				Shank—bone in.....	5	Shank—bone in.....	5		
				Shank—boneless.....	4	Shank—boneless.....	4		
				Stew and Other Cuts		Stew and Other Cuts			
				Breast—bone in.....	4	Breast—bone in.....	4		
				Breast—boneless.....	4	Breast—boneless.....	4		
				Flank Meat.....	5	Flank Meat.....	5		
				Neck—bone in.....	5	Neck—bone in.....	5		
				Neck—boneless.....	4	Neck—boneless.....	4		
				Shank—bone in.....	5	Shank—bone in.....	5		
				Shank—boneless.....	4	Shank—boneless.....	4		
				Stew and Other Cuts		Stew and Other Cuts			
				Breast—bone in.....	4	Breast—bone in.....	4		
				Breast—boneless.....	4	Breast—boneless.....	4		
				Flank Meat.....	5	Flank Meat.....	5		
				Neck—bone in.....	5	Neck—bone in.....	5		
				Neck—boneless.....	4	Neck—boneless.....	4		
				Shank—bone in.....	5	Shank—bone in.....	5		
				Shank—boneless.....	4	Shank—boneless.....	4		
				Stew and Other Cuts		Stew and Other Cuts			
				Breast—bone in.....	4	Breast—bone in.....	4		
				Breast—boneless.....	4	Breast—boneless.....	4		
				Flank Meat.....	5	Flank Meat.....	5		
				Neck—bone in.....	5	Neck—bone in.....	5		
				Neck—boneless.....	4	Neck—boneless.....	4		
				Shank—bone in.....	5	Shank—bone in.....	5		
				Shank—boneless.....	4	Shank—boneless.....	4		
				Stew and Other Cuts		Stew and Other Cuts			
				Breast—bone in.....	4	Breast—bone in.....	4		
				Breast—boneless.....	4	Breast—boneless.....	4		
				Flank Meat.....	5	Flank Meat.....	5		
				Neck—bone in.....	5	Neck—bone in.....	5		
				Neck—boneless.....	4	Neck—boneless.....	4		
				Shank—bone in.....	5	Shank—bone in.....	5		
				Shank—boneless.....	4	Shank—boneless.....	4		
				Stew and Other Cuts		Stew and Other Cuts			
				Breast—bone in.....	4	Breast—bone in.....	4		
				Breast—boneless.....	4	Breast—boneless.....	4		
				Flank Meat.....	5	Flank Meat.....	5		
				Neck—bone in.....	5	Neck—bone in.....	5		
				Neck—boneless.....	4	Neck—boneless.....	4		
				Shank—bone in.....	5	Shank—bone in.....	5		
				Shank—boneless.....	4	Shank—boneless.....	4		
				Stew and Other Cuts		Stew and Other Cuts			
				Breast—bone in.....	4	Breast—bone in.....	4		
				Breast—boneless.....	4	Breast—boneless.....	4		
				Flank Meat.....	5	Flank Meat.....	5		
				Neck—bone in.....	5	Neck—bone in.....	5		
				Neck—boneless.....	4	Neck—boneless.....	4		
				Shank—bone in.....	5	Shank—bone in.....	5		
				Shank—boneless.....	4	Shank—boneless.....	4		
				Stew and Other Cuts		Stew and Other Cuts			
				Breast—bone in.....	4	Breast—bone in.....	4		
				Breast—boneless.....	4	Breast—boneless.....	4		
				Flank Meat.....	5	Flank Meat.....	5		
				Neck—bone in.....	5	Neck—bone in.....	5		
				Neck—boneless.....	4	Neck—boneless.....	4		
				Shank—bone in.....	5	Shank—bone in.....	5		
				Shank—boneless.....	4	Shank—boneless.....	4		
				Stew and Other Cuts		Stew and Other Cuts			
				Breast—bone in.....	4	Breast—bone in.....	4		
				Breast—boneless.....	4	Breast—boneless.....	4		
				Flank Meat.....	5	Flank Meat.....	5		
				Neck—bone in.....	5	Neck—bone in.....	5		
				Neck—boneless.....	4	Neck—boneless.....	4		
				Shank—bone in.....	5	Shank—bone in.....	5		
				Shank—boneless.....	4	Shank—boneless.....	4		



Friend in Need

We pride ourselves upon the ability of our staff to bring sympathy and understanding to your problems and to help you solve them according to your best interests and the requirements of dignity and good taste.

William V. Irvine
Funeral Home

276 Washington Avenue
Belleville, N. J.
Telephone Belleville 2-1111

CHURCHES

Church of Christ, Scientist

505 Broad Street, Newark
"Reality" is the lesson-sermon subject for Sunday in all Christian Science Churches and Societies.
The Golden Text is "Eye hath not seen, nor ear heard, neither have entered into the heart of man, the things which God hath prepared for them that love him."
Among the lesson-sermon citations is the following from the Bible: "For the Lord is good; his mercy is everlasting; and his truth endureth to all generations."
The lesson-sermon also includes the following passage from the Christian Science textbook, "All the real is eternal. Perfection underlies reality. Without perfection, nothing is wholly real. All things will continue to disappear, until perfection appears and reality is reached."

Bethany Lutheran

Jordan and New Streets.
Rev. Willard H. Borchers, Pastor.
Sunday, 9:30, Sunday school and Adult Bible class, 11, The Service; sermon topic, "On Whose Side."
Tuesday, 7:30, Sunday school teacher training class at the home of Edmund Penslen, 92 Liberty avenue.
Wednesday, 8, Mid-week Lenten service; "The Fatal Mistake."
Saturday, 9 a. m., Confirmation class.

Redeemer Lutheran

Broadway at Carteret Street, Newark, N. J.
Paul F. Arndt, Pastor.
Morning service, 10:45. Sermon topic: "The Importance of Corporate Worship." Sunday school and Bible class, 9:30 a. m. Mid-week Lenten service, Thursday, 8 p. m. Sermon topic: "Evading the Cross."

Grace Baptist

Overlook Ave. and Bremond St.
Marshall J. Whitehead, Pastor.
Thursday, 3:30, Girl Scouts, Troop 8; 7:30, choir rehearsal.
Friday, 7:30, Boy Scouts, Troop 386.
Sunday, 9:30, Sunday school; 11, Loyalty Sunday pageant, "Out of Our Hearts"; 7, young people's meeting; 8, Robert S. Womer, guest speaker.
Monday, 7, White Rose Guild meeting with Dorothy Carpenter.
Tuesday, 3:30, junior choir meeting with Mrs. Buckley.

Christ Episcopal

395 Washington Avenue, Peter R. Deckenbach, Rector.
Thursday, 8 p. m., a special Lenten service will be held every Thursday evening during the rest of the season. The rector has planned a series of meditations on the days leading up to the Crucifixion.
Sunday, a celebration of the Holy Communion, 7:45 a. m. Morning prayer and sermon, 11. The theme at this service will be the third of a series of addresses on the Creed, "Born of the Virgin Mary."
Musical service, 4 p. m. Sunday. The Senior Choir of the parish is rendering Maunders' beautiful cantata "Penitence, Pardon and Peace." There will be a chorus of twenty voices with John Markoe at the organ.

Cedar Hill Chapel

Ohlson and Highland Avenues, Nutley.
(Non-Sectarian)
Lord's Day Services: 9:30. Bible School for all ages, 11. Worship and "Remembrance of Lord's death till He Come," 8. Gospel service.
Friday, 8 p. m., prayer and Christian Doctrine at the chapel.

Fewsmith Presbyterian

Union Avenue and Little Street, Dr. O. Bell Close, pastor.
Sunday, 9:45, Church school and Bible class, 11; Beginner's department, 11, Public worship, sermon topic, "Sacrifice."
Sunday, 8 p. m., Lenten service.

CLOSE LEAVES FOR
FIELD SERVICESon Of Fewsmith Minister Takes
Leave Of Absence For Work
In North Africa

Theodore R. Close, assistant director of recreation of the Town of Belleville, has been chosen for the American Field service for ambulance and first aid work in North Africa. The son of Dr. and Mrs. O. Bell Close, minister of the Fewsmith Memorial Presbyterian Church of Belleville, expects to leave for active duty in North Africa shortly after April 1.
Close, a three letter man at State Teacher's college, winning letters in tennis, football and basketball, was appointed to the position of assistant recreation director during 1942. He has innovated and supervised basketball leagues for the children of the town of grammar school age during the past season.
Young Close is a graduate of Belleville High School and attended Seton Hall college before transferring to the Montclair college. He is a certified Red Cross life saver having acquired his credentials over three years ago. He has been very active in the local Boy Scout movement.

Set Up Program

Commissioner Louis A. Noll, Director of the Department of Parks and Public Property, announced last night that he was granting Mr. Close a leave of absence and hoped for his early return at the conclusion of the present hostilities so that he might proceed with the program set up by Close for the younger children of the town.
Close will leave for North Africa by plane or boat. If his ambulance is to be delivered from this country, he will proceed with it on the boat taking full charge of the ambulance before it leaves this country. If the ambulance is to be picked up by him in Africa he will proceed by plane.

Catholic Women Hear
Rev. Paul R. Perrotta

The Catholic Women's College club held its regular monthly meeting last Thursday night in the Helen MacHugh Studio, 37 Washington street, Newark. Miss Elizabeth N. Kennedy presided over the business session.
Miss Kennedy announced the appointment of Miss E. Irene McCullough as chairman of the ninth annual Communion Breakfast to be held sometime in May.
Miss Marian E. McLaughlin, vice-president and program chair, meeting every first Thursday of the month.
Friday, senior choir and male quartet, 7:30 p. m. Children's Bible hour every Friday, 4 p. m. "Glad" Girls every Tuesday, 4 p. m. Day Aids Aid, at 1:30 p. m.
Note: This list of meetings does not include most social activities held at the Banti - Banti House.

Montgomery Presbyterian

638 Mill street, O. W. Chapin, Minister.
Tonight, 7:30, Choir rehearsal.
Friday, 6:30, Annual congregational dinner; by invitation and reservation only. 8 Congregation, at and parish meeting; election of elders, deacons and trustees.
Sunday, 9:45, Sunday school, 11, Morning worship; topic, "The Peril of The Short Cut"; 6, Christian Endeavor. 6:45, Young People's society.
Wednesday, 8, Home Lenten service at the residence of Mr. and Mrs. Floyd Hummel, 32 Hewitt Avenue; topic, "Divine Providence."
Thursday, April 1, 1, Red Cross missionary and sewing circle.

Wesley Methodist

Rev. Edgar M. Compton, Pastor.
225 Washington Avenue.
Today, 2:30, Group A, Woman's society for Christian service will meet in the church parlors; hostesses, Mrs. Son's circle. 8, Senior Choir rehearsal in the chapel, 8:15, Monthly meeting of Wesley men.
Sunday, 9:30, Church School, 10:45, Morning worship, 6:45, Methodist Youth Fellowship. The preparatory membership class will meet at 5:30 in the parsonage and will continue to meet until Palm Sunday when members will be received into the church. Others desiring to join the church on that day are requested to notify the pastor.
Youth Fellowship group will be the guests of the Fellowship group of Trinity Methodist Church, New Brighton, S. I., next Sunday afternoon.
The name of Miss Mary Elizabeth Cronsey, a Lieutenant in the Army medical corps, has been added to the service honor roll.

"SPIRELLA"

Keep Fit and Look Trim for victory.

Order the Individual Designed Figure Support garment to complete your new Easter Outfit.

A Free preview in your home in our Spirella modeling garments. A Spirella is never sold as a "ready-made" garment.

Mrs. Irene S. White
181 Garden Avenue
Belleville, New Jersey
Phone Be. 2-1544

man, introduced the speaker of the evening, the Rev. Paul C. Perrotta, O.P., who chose as his subject, "The Veronicas of the Ages." Father Perrotta, now head of the Philosophy Department of Caldwell College for Women, Caldwell, N. J., was a member of the faculty of Providence College, Providence, R. I., for many years. He holds the degree of S.T.L.B. as well as Doctor of Philosophy, having studied at the Catholic University in Washington and the American College in Rome. He has been a member of the faculty of the Caldwell institution for the past three years.

Republican Women Elect Officers
For Coming Year

At the March 11 meeting of the Belleville Women's Republican club members nominated for the spring election were Mrs. Julia K. Alexander for president; Mrs. Esther Adams, first vice-president; Mrs. Helena Moniot, second vice-president; Mrs. Fred Van Duyn, treasurer; Mrs. Fred Idenden, recording secretary; Mrs. Florence Hagetter, corresponding secretary and Mrs. Samuel Ferguson, assistant corresponding secretary.
Nominated also were Mrs. Stella Voltaire for hospitality chairman; Mrs. A. B. Satz, house chairman; Mrs. Ruth Kraft, sunshine chairman; Mrs. Catherine

White, publicity chairman; Mrs. Ruth Fredericks, Legislative chairman; Mrs. Violet Rochau, ways and means chairman; Mrs. Julia Zabriske, assistant ways and means chairman, Mrs. Ruth Reynolds to head the civics committee and Mrs. Emily Sundheim in charge of programs. Mrs. John F. O'Brien will continue as honorary president.
After nominations were made by the election committee, of which Mrs. Emily Mayer is chairman, Stewart Martin of the Office of Price administration addressed the club on food rationing. Mr. Martin discussed the benefits of rationing and the evils, such as black market, which might become prevalent without it. He clarified the point system and expressed the opinion that the quality as well as the quantity of most available would increase as rationing of that commodity became established.

Hear About Rationing

A meeting of the nutrition and canteen committee of the defense council tonight at the Woman's club will be addressed by Mrs. Margaret Shepard of the Essex County Extension service. The meeting, which will open at 8, may be attended by the public. Mrs. Shepard's topic will be Can-

ning and Point Rationing. John J. Hewitt is chairman of the committee.
Miss Doris Stewart of Smallwood ave. will be hostess tomorrow evening to six friends and their soldier escorts at dinner and dancing. Lt. Kenneth Cole will be his hostess' partner for the evening. Miss Stewart is the daughter of Lt. and Mrs. Geo. Stewart.

Dr. N. T. Lamb
Surgeon Chiropodist

Now Located At
517 Franklin Avenue
Opposite Franklin Theatre
Telephone Nutley 2-3412
HOURS: DAILY 9 a. m. - 5 p. m.
Wednesday, 9 a. m. - 1 p. m.

FELDMAN'S
DEPT. STORE

115 Wash. Av., Belleville
SALES CHECK
620

Dated March 19, 1943

Have you seen our new Van Heusen Line?

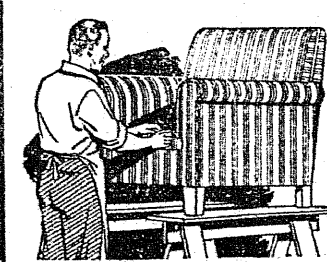
WHY NOT
Finance Your Home Mortgage
NOW?

ATTRACTIVE RATES AND TERMS

Apply

27 Years of Continuous Dividends

300 Washington Avenue Belleville



Slip Covers

8-Piece Set \$40.00
Complete 40.00 and up

All dust-proof, tub-fast, pre-shrunk materials

EXPERT WORKMANSHIP — All Work Guaranteed

Russell T. MacEachern

135 Washington Ave. Belleville 2-4910

A Letter from Mother

"We heard from the Red Cross Field Director at your hospital that you were on the road to recovery.

"How thankful your father and I were to know that your life had been spared, and that you were already getting better. And how grateful we are to the Red Cross for all they have done to keep our boy safe and sound.

"Somehow, I never thought, when I was making Red Cross surgical dressings, that perhaps some of them would bind the wounds of one dear to me.

"And when we gave our blood, Dad and I, we never imagined that our own boy would so soon need it, and thanks to the Red Cross, it would be there.

"I wish more parents and relatives and friends knew what the Red Cross is doing for their very own boys, from the moment they arrive at the training camp, right to the fighting front, and afterwards.

"I'm sure that if they did, they would go down deep into their pockets to help the Red Cross now, when it needs help as never before.

"You may be sure that Dad and I will do our part. This year we're giving double!"

Perhaps you, too, have someone in service whom you will want to help, intimately and personally, as the Red Cross does help him so well.

No matter where your soldier or sailor may be, the Red Cross is nearby, ready in sickness and in health, alert for mental as well as physical needs.

So give now to the Red Cross War Fund. Give generously, for the task is as huge as it is worthy. Give more this year—give double if you can.

Your Dollars help make possible the

AMERICAN RED CROSS

DOUBLE WHAT YOU GAVE LAST YEAR
Belleville's Quota Is \$26,200.00

This Advertisement is a contribution to the American Red Cross by

FRANK J. HALE, President
National Grain Yeast Corporation
Belleville, New Jersey

KIERNAN FUNERAL HOME

George F. Kiernan, Funeral Director

Telephone Belleville 2-3503

101 Union Ave.

Belleville, N. J.

pt. George Bickell Named my Air Base Commander

Pearl Harbor Attack
355th Fighters

be a favorite extra-curricular past-time, when it was discovered that the majority had been having experiences of their own in England, Australia and other war theatres.

Commander of 355th

With training finished, and accompanied by his wife, whom he had not seen since that fateful December 7, the young aviator returned to the Pearl Harbor base.

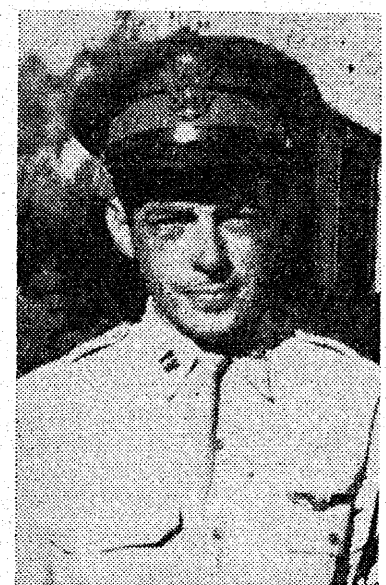
of the Pearl Harbor base, Capt. George Bickell, of the former Miss Flynn of town, has been named commander of the new 355th fighter squadron in Hawaii.

near San Francisco, Calif., of the appointment was received this week with a newspaper picture and clipping from the Hayward which showed young George grinning broadly at his partner in command, Capt. C. C. Bonner, veteran of the Mexican campaign in the first world war, and base commander of the new flying field. The accompanying letter told how since their arrival "royally entertained" by the mayor, sheriff and townspeople who were bursting with pride over their new airbase which is largest in the country.

His wife, the daughter of Dr. and Mrs. E. A. Flynn of 94 Van Houten place, also a witness of the scene that will go down "in infamy" is with him there.

In fact, she has been with him almost since his arrival in the states last September. Recommended by the Hawaiian department of the Army command for special duty, the 27-year-old captain was moved from Wheeler field in Oahu last June. He spent the remainder of the summer at Midway island before being sent to the fighter command base in Hawaii for special pilot training.

The two week intensive course was a happy one, the Bickells relate, for there, he was part of a reunion with friends who had trained with him at Kelly field, in Texas. Swapping stories proved to



Capt. George Bickell

ported to Oakland where he was appointed commander of the newly formed 355th fighter squadron. Six weeks training followed in Nevada before he and his 355th were assigned on March 1 to the Hayward base.

A lieutenant at the time of the Pearl Harbor attack, Bickell was flight commander of a pursuit squadron at Wheeler field which

proved a good target. He reached the auxiliary field and took to the air just as Tojo's emissaries began their strafing. Two ships following him were wrecked before they could get off the ground and their pilots killed. Bickell, infuriated by the surprise managed to get 200 yards over the sea, how ever, before being hit.

He crashed in the water and swam ashore, got another ship and patrolled for the rest of the day, fighting mad. During his tussle with the representatives of the Rising Sun, his wife and a woman companion narrowly escaped injury as the car in which they were escaping was the repeated target of a low-flying enemy plane. They scrambled into a road-side ditch a number of times for safety, on their way to the field. Mrs. Bickell has related that she will never forget arriving at the beach in time to see George wading out of the surf.

She followed his "suggestions" to the letter she said, given before he grabbed a second plane, and stayed in private homes and dormitories away from the post at night until she was evacuated on the first ship to leave the island with the wounded.

25-Year Award



A. R. Leonard

A. R. Leonard, 40 Preston street, Belleville, rounded the thirty-five year mark this month, March 1, in his career as a lineman in the telephone organization in northern New Jersey. The New Jersey Bell Telephone Company's gold service emblem for the period was presented to Leonard at a luncheon held in his honor on March 17 at the Alexander Hamilton Hotel, Paterson. The emblem was presented by H. A. Lafler, division plant superintendent for the company. A member of the Telephone Pioneers of America, Leonard since 1936 has been linemen-chauffeur in the construction forces of the company in Passaic County.

Local American Legion Chapter Celebrates Founding

Belleville Unit 105, American Legion, celebrated the 24th anniversary of its organization Monday, March 8. A card party was held at the Recreation House by the Legion Auxiliary and refreshments included a huge birthday cake.

County delegates Arthur A. MacCready, William I. Labauch and Richard D. Shannon attended the county meeting in Newark recently. The Post's next business meeting will be held at the Recreation House on April 5 when Commander Alonzo A. Hartley will appoint a committee to propose nominations for officers for the coming year.

The Post has recently been complimented by county and state commanders on current membership which exceeds last year's total. Orry Leo Martell of 85 Bell street was voted into membership at the February meeting. Members also voted then a contribution of \$10 to the Red Cross. They are lending financial assistance to the committee of Vice-Department Commander R. Graham Huntington who supply cigarettes, magazines and other articles of relaxation to the induction centers in Newark and Camden.

No. 5 P. T. A. Collects \$12 In Recent Fat Collection

Members of the Parent Teacher association of School No. 5, through their salvage chairman, Mrs. Armando deAraujo, have announced the collection of \$12 in the fat collection campaign which has been carried on during the past three months. About 300 pounds were turned in. A group of women were delegated to accept fat from other individuals to save time and transportation in delivery to butchers. Mrs. deAraujo maintains deposit jars in neighborhood butcher shops where the members can leave the money realized on their fats when it is given to them. The funds will be turned over to the National Council of Parent Teacher associations which makes use of it in purchasing ambulances for the armed forces.

The second in a series of discussions on the function of the home in wartime was held in the library of the Greylock school this morning at 10 when Mrs. Margaret Shepard, Essex County extension service home economist, talked on the care of household tools and devices. "Take Care of The Tools of Your Trade" was the title of her address.

Mrs. Shepard's third lecture will be given next Thursday morning and will cover the topic, "Why and How to Save Time in the Kitchen." Anyone who wishes to attend this or the concluding lecture on April 1st will be welcomed. The fourth presentation, which will be conducted by Mrs. Sally Splain Serbell of the extension service, concerns the repairing and remodeling of clothing, an increasingly important topic.

Another story at the expense of the so-called "bureaucrats" is going the rounds. Man says he heard Bureau of Mines official say that mine operators should be made "to step up the mining of copper, aluminum and brass." Did you ever go down in a brass mine?

An organization of technical researchers now offers a loose-leaf service on substitutes for hundreds of scarce materials.

ABBOTS

2 Big Drug Stores

120
Washington Ave.
FREE DELIVERY
Belleville 2-1548

531
Washington Ave.
FREE DELIVERY
Belleville 2-3646

We Are Proud Of The Prescription Service We Are Able To Give Belleville

A pharmacy is more than a money-making establishment. And it should be, for upon it depends the health and safety of the community it serves.

We at Abbots do pride ourselves upon the service we are giving. Serving Belleville 24 hours a day, we are staffed with four Registered Pharmacists—men who place SERVICE above all else.

That is why we advise you to "See Your Doctor First"—and let Abbots fill your prescription.

Headquarters For
Biological Supplies -- Vitamins
Serums, etc.

Fast, Accurate, Prescription Service

School Paper Wins Award For Third Time

The Voice of Number Three, the quarterly newspaper publication of School No. 3, received the Medalist Award at the 19th Annual School Press association convention held at the Columbia University from March 11 to 13 inclusive. This publication also received Medalist awards in 1936, 1939, 1941. School papers from all sections of the United States participated in this contest.

The editor-in-chief is Nicholas Hagoort and Barbara Armstrong is assistant editor. Robert Clough is the typing manager and Betty Ramage manages the circulation. The editors in charge of literary, poetry, feature, book friends, news, humor, sports, and art sections of the paper are filled by the following members of the staff: Donald McEligot, Thomas Walsh, Celeste Payne, Shirley Crisp, Robert Anderson, Richard Hermann, Jack Sheehan, Richard Chernin, Jerry Kaden, Vincent Wozniak, Nelson Shaw, Emily Beck, Fred Bellet, Richard Wahl, Joan Bramhall, Louise Vaccarella, Nelson Shaw and Daniel Struck.

Miss Margaret O'Neil, head of the English department was commended by Superintendent Parmar for the good job she did as faculty advisor for the newspaper when she took over from Miss Margaret Hass. Other faculty advisors for the publication included Mrs. Virginia Ruhe, Mrs. Ethel Joule, Mrs. Mabel Smith, Miss Lucy Smith, and Miss Jean Radick.

Fresh fruit and vegetable departments will be expanded by grocery chains as they play down hard-to-get tinned foods. Too, it's economical to buy in-season food stuffs.



VAN HEUSEN SHIRTS
Pajamas - Underwear
Make this store your store for Van Heusen Men's Wear

Feldman's Dept. Store

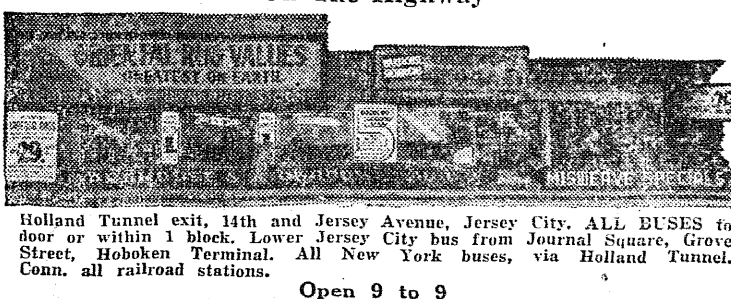
Work Clothes of Quality at Low Prices
115 WASHINGTON AVE. BELLEVILLE, N. J.
We Deliver — Phone Belleville 2-2760

WAR FORCED LIQUIDATION 5000 Orientals

Imported and American Replicas
Must Be Sold In 30 Days At Great Sacrifice
Your Last Opportunity—For the Duration—For Such LOW PRICES and LARGE SELECTION. Don't Miss This Outstanding Opportunity.

Bizar Rug Galleries

On The Highway



WINES LATERZA'S LIQUORS

309 Union Ave. Near Joralemon St.
Eighths ON ICE 3.20 and 4.20
FREE DELIVERY
Phone BELLE. 2-1318
A Complete Stock of Wines, Liquors and Cordials
Always on Hand—Imported and Domestic

FOOD FAIR

AMERICA'S FINEST FOOD DEPARTMENT STORES

SHOP EARLY! THURSDAY, FRIDAY & SATURDAY!

524 Washington Avenue
Belleville, N. J.

STORE HOURS:
Mon., Tues., Wed. and Thurs.: 9 a.m. to 6 p.m.
Fri., Sat.: 9 a.m. to 10 p.m.

Ration Notes to Remember:
COFFEE, Now Redeeming Stamp No. 26 Good for 1 pound
SUGAR, Now Redeeming Stamp No. 12 Good for 5 pounds

BLUE A-B-C STAMPS for MARCH
ARE REDEEMABLE ONLY SIX MORE SHOPPING DAYS
VOID after Wed. MAR. 31

BLUE D-E-F STAMPS for APRIL
CAN BE USED NOW! AND THROUGHOUT THE MONTH OF APRIL

More Really Good Cups of Coffee to the Found!

Buy LADY FAIR COFFEE 1-lb. Bag 24¢

A FIRST QUALITY COFFEE! RICH! VIGOROUS! WINELY!

Fresh Fruits & Vegetables

California Fresh, Long, Green, Tender Spears

Asparagus

A Very Special Value! lb. 29¢

Iceberg Lettuce Solid Crisp 2 Heads 23¢

Western Carrots Fresh, Original Bunches 2 Large Bunches 19¢

Oranges New, Crisp, Florida Valencias! Doz. 29¢ Large Size Doz. 39¢

Seedless Grapefruit VERY JUICY 4 for 25¢

Fre-Mar Run of Pod Peas

13 Points No. 303 13¢

Smith's Green Split Peas

4 Points 1-lb. Box 12¢

N. Y. State JULIENNE Red Beets

8 Points 16-oz. Jar 10¢

Val-Vita Calif. Halves Yellow Cling Peaches

21 Points No. 21 19¢

Dole's Pineapple Juice

11 Points No. 2 14¢

California Dried Prunes

70-80 in lb. 12 Points 1-lb. Pkg 13¢

Fresh Sea Foods

Fresh Whittings lb. 15¢

Boston Mackerel lb. 25¢

Canadian Smelts lb. 29¢

BUNKER HILL

4 Points each lb. 3-bag 28¢

TRIAD CALIF. Dried Lima Beans

4 Points 1-lb. Cello 16¢

FANCY SLICED Libbys Pineapple

16 Points No. 2 21¢

CAMPBELL'S Tomato Juice

14 Points 29-oz. Can 10¢

FYNE TASTE Tomato Puree

10 Points Tall Can 6¢

THOMPSON'S Seedless Raisins

12 Points 1-lb. Cello Pkg 12¢

Lenten Dairy Variety

FOOD FAIR brand Large White or Brown Eggs Dozen in Carton 50¢

PABSTETT VARIETY 6 1/2-oz. Pkg. 18¢

Sharp CHEESE Real Snappy lb. 41¢

Med. Sharp Cheese lb. 37¢

SWEITZER Fancy Domestic lb. 45¢

Muenster Cheese Full Cream lb. 37¢

Fyne Taste or Land O'Lakes Evap. MILK 3 Tall Cans 28¢

Maraschino Cherries 4-oz. Jar 9¢

Queen Olives PLAIN THROWN 7 1/2-oz. Jar 21¢

Quaker Puffed Rice Reg. Pkg. 10¢

Quaker Puffed Wheat Reg. Pkg. 9¢

Shredded Ralston 2 Reg. Pkgs. 25¢

Pillsbury's PANCAKE FLOUR 2 Reg. Pkgs. 17¢

Pillsbury's BUCKWHEAT FLOUR 2 Reg. Pkgs. 11¢

Libby's Pickles HOME STYLE 15-oz. Jar 17¢

Sauer Kraut GOLDSMITH'S Qt. Jar 16¢

Hudson Napkins 2 Pkgs. of 80 15¢

Octagon Soap Flakes 2 Reg. Pkgs. 41¢

Octagon Powder Reg. Pkg. 15¢

Kirkman's Cleanser 3 Reg. Cans 14¢

Kirkman's Powder 1-lb. Pkg. 18¢

Gro-Pup Dog Meal 3 11-oz. Pkgs. 25¢

Fyne-Taste APPLEBUTTER 28-oz. Jar 15¢

STALEY'S

Cube Gloss Starch 2 1/2-oz. Pkgs. 15¢

Cream Corn Starch Reg. Pkg. 8¢

HI-HO CRACKERS

By Sunshine Large Pkg. 19¢

Pine Scented SOAP

2 Giant Bars 19¢

P & G SOAP

The White Naptha Soap 3 Reg. Bars 13¢

UNRATIONS LENTEN FOODS!

Caruso Noodles FINE, WIDE and MEDIUM 1-lb. Cello 19¢

Van Camp's Tenderoni 2 Reg. Pkgs. 15¢

Ehler's Grade-A Rice 1-lb. Box 12¢

Pearl Barley QUAKER SCOTCH 1-lb. Box 10¢

Fyne-Taste Salt PLAIN or IODIZED 2 1 1/2-lb. Boxes 7¢

P. S. G. Guaranteed Meats

No Stamps Needed

Extra Sharp

Cheddar Cheese

lb. 45¢

White or Colored

Regent, Full-Milk, Wisconsin

Limburger

lb. 38¢

Blue Cheese

lb. 55¢

Delicatessen Dept.

HYGRADE Thinkin' Frankfurters lb. 37¢

Ass'd Meat Loaves Freshly Sliced 1/2-lb. 19¢

Long BOLOGNA All Meat Sold By The Piece 1/2-lb. 35¢

Pressed HAM Freshly Sliced 1/2-lb. 27¢

SALADS Freshly Made Cole Slaw Potato or Macaroni lb. 15¢